

REPORT TO THE COMMUNITY

2015-2016



2017 Board of Directors & Year-Round Staff

YEAR-ROUND STAFF

Rabbi Joseph M. Menashe
Executive Director

Randy Michaels
Director of Finance & Administration

John Magoulas
Director of Development

Ariella Moss Peterseil
Associate Director

Jillian Berman
Health Center Administrator

Efren Calderon
Maintenance Supervisor

Angela Contreras
Accounts Receivable

Brian Dab
*Facilities & Special Projects
Associate*

Vicente Garcia
Dining Operations

Giovanni Herrera
Dining Room Manager

Dr. Aviva Levine Jacobs
Director of Camper Care

Etan Kelman
Ropes Course Supervisor

Yael Kornfeld
Program Coordinator

Daniel Maya
Finance and Accounting Manager

Cheryl McElliot
Office Coordinator

Teri Naftalin
Hospitality Coordinator

Elana Naftalin Kelman
Tikvah Director

Gaby Natelson
*Recruitment & Engagement
Associate*

Ari Polsky
*Marketing & Communications
Associate*

Hanit Stern
Registrar

Pam Trotter
Development Assistant

German Velasquez
Executive Chef

Usha Visjani
Finance Assistant



BOARD OF DIRECTORS

Andrew I. Spitzer, MD,* *Chair*

Dr. Monique Araya

Nancy Beiser*

Ellen Beren

Dr. Aviva Biederman

Ellen Brown*

Rochelle Cohen*

Craig Cooper

Alison Feinberg

Oren Gabriel

Jeffrey Goss

David Kaplan

Jeffrey Kaplan*

Rebecca Kekst

Lisa Lainer-Fagan

Sheila Leibovic*

Paulette Light

Jonny Mars

Josh Mereminsky

Ilana Meskin*

Karmi Monsher*

Richard Robin

Dr. Lee Rosen*

Jeremy Rosenthal

Avi Schlesinger*

Dana Goodman Schlessinger*

Tzivia Schwartz Getzug

Laura-Beth Sholkoff

Dan Silver

Joy Silver

Sheila Baran Spiwak

Stuart Tochner

Robert Trief

Shari Weiner

Lesley Wolman*

Honorary Life Members

Dr. Robert H. Barnhard

Murray Cohen z"l

Jake Farber

Dr. Norman Jacoby

Mannon Kaplan

Howard Levine

Louis Miller

Julie Platt

Jay Reisbaum

Dr. Paul Schultz

*Executive Committee
members



WELCOME

to Camp Ramah in California's *Report to the Community*. In the two years since our previous publication, we've achieved a number of significant milestones and are currently engaged in several projects which will impact our camp and our campers during the coming years and for generations to come.

May 2016: 60th Anniversary

We commemorated this milestone in two meaningful ways. We encouraged Ramahniks across the globe to celebrate Shabbat together and distributed 250 Ramah Shabbat in a Box kits, including a Ramah challah cover and songbooks. These alumni gatherings reinforced the foundation for Jewish religious observance and community that Ramah has provided to generations of staff and campers. At camp in Ojai, many attended a Ramah Academy Shabbat weekend with visiting scholars, culminating with the **I ♥ RAMAH** community-wide celebration. Multiple generations shared memories, pictures, stories, and songs while enjoying a fun-filled day at camp with the pool, ropes course, hiking trails and more.

Summer 2016: New Edah & Property

For too many years, we had limited capacity in our Mador program. With the commitment and leadership of our board members and the support of our community, we introduced an additional camper year by creating the Kochavim Edah and relaunching Machon. With the fulfillment of this dream emerged new challenges of space, beds, and county permission to expand our facilities. In what seemed an unmistakable sign of divine intervention, the adjacent property became available for purchase.

Through the negotiations of our board team, we successfully acquired the property to create a footprint of nearly 445 contiguous acres of land, owned independently by Camp Ramah in California! This game changing event empowers us on many levels, and is a critical turning point in our history, securing a bright future filled with opportunities for facilities upgrades and creative outdoor programming. The generosity of our community to support this project has been unprecedented, and we are less than \$500,000 away from achieving our \$5 million campaign goal. With your continued support, we will ultimately fulfill our vision to build the Goldstone Machon Shetach to house 175 additional campers each summer.

Effects of Drought

The waning years of the drought, and the rain storms of this past winter have necessitated over \$500,000 in expenses related to securing, or

preemptively removing, trees at risk of falling. We've contracted with arborists to catalog and monitor each of the nearly 700 trees on our property and identify those which could potentially pose any risk.

Day Camp Study

We are deeply engaged in exploration of a Camp Ramah in California branded day-camp. Based on the experience of the broader Jewish camping world, we strongly believe that day camping offers us both the opportunity to extend the Ramah experience to an even younger cohort of campers, and also establishes a future pipeline for the full and robust residential camping experience that Ramah provides. This project will mature during the next few years and represents an enormously exciting evolutionary moment in the global Ramah experience.

Affordability

Finally, affordability remains at the forefront of everything we do. We are actively engaged with the National Ramah Commission to create a national philanthropic effort aimed specifically at affordability for the most financially challenged in our community. Locally, we continue to sustain our own scholarship program, and to increase the dollars available for distribution. While our day-to-day costs increase, which results in higher fees, we are deeply committed to ensuring that any child who wants to be a Ramahnik is not prevented from doing so due to a lack of financial ability.

Your Generosity

Our accomplishments, our plans, our dreams, and our vision are only possible through the generosity of our community, and the implementation of our professionals. We are deeply grateful as campers, staff, lay leaders, and friends for the enormous support from all of our constituencies. This report outlines much of our current work and future plans. We welcome your participation, your thoughts and feedback, and your support as we continue to enhance and evolve the Camp Ramah in California Experience for a Lifetime.

Respectfully and passionately,



Andrew I. Spitzer, MD, Chair, Board of Directors



Camp Ramah in California

CAMP RAMAH IN CALIFORNIA is part of a worldwide network of Ramah overnight and day camps spanning the globe from North America to South America, Israel, and Eastern Europe. Ramah's emergence has been described as "the jewel in the crown of the Conservative Movement." Camp Ramah in California, which celebrated its 60th Anniversary in 2016, serves the Western Region of North America – including Alaska, Arizona, British Columbia, California, Colorado, Hawaii, Nevada, New Mexico, Oregon, Utah, and Washington. Each summer Ramah campers, from day schools and Hebrew schools in large and small Jewish communities across the region, come together in Ojai on the Janet and Jake Farber Campgrounds at the Max and Pauline Zimmer Conference Center.

Ramah summers offer swimming, drama, ceramics and arts and crafts, video production, Israeli dancing, archery, cooking, nature hikes, and more. Hebrew musicals, performed at the Jacoby Amphitheater, are summer highlights. Ramah's sports program includes basketball, ga-ga, volleyball, football, baseball, tennis, soccer, and the Meskin Family Ropes Course.



Specialized Programs

Tikvah – *Educate a child according to his/her ways.* (Proverbs 22:6) Amitzim and Ezra are Ramah's innovative Tikvah programs, which provide sleep-away summer camp and vocational training experiences for adolescents and young adults with differences in learning, communication, social interactions, and developmental delays. These campers have the opportunity to receive all of the benefits of the larger camp program. Thanks to generous grants from the Jewish Community Foundation of Los Angeles and other donors, Camp Ohr Lanu was initiated in 2008. Ohr Lanu is a week-long camp that combines study, prayer and fun into a program designed specifically for families who have children ages 5–14 with special needs.

Ramah Seminar in Israel – A fun-filled, in-depth program for high school seniors in which students spend 6 weeks in Israel complete with hikes, archaeology, and desert treks. It introduces participants to the history of the Jewish state and involves them in central issues facing Israel today. Informal Hebrew language education and the study of contemporary and classic texts are central to the program.

Max and Pauline Zimmer Conference Center – In addition to summer programs, the Max and Pauline Zimmer Conference Center and the Irene and Howard Levine Family Retreat Center are also open year-round, providing a range of programs for people from all walks of life — including Family Programs, Children's Weekends and a Passover Camp. At Ramah, learning, fun, and personal growth flourish all year in an environment where Jewish values and a warm community are an inviting welcome for everyone to participate.



שֶׁהֶעֱחִיָּנוּ Shehechiyanu

MILESTONES

2015

- **Midah L'Edah** program is introduced to Machaneh Ramah. The program teaches each edah an age-appropriate Jewish value that is built upon each year in the Ramah journey.

2015 & 2016

- Participation and Partnership with The Jewish Federation of Greater Los Angeles for **Tour de Summer Camps**

2016

- Celebrated our 60th anniversary
- John Magoulas hired as Director of Development
- Acquired 174 acres of new property on our northern border
- Roz & Abner Goldstine give a historic gift to name the new *Machon Shetach* (living area)
- 1,700 Campers and Staff in 2016, a recent high
- 441 Campers were able to attend camp thanks to the generosity of \$600,000 in scholarship gifts
- Tikkun Olam and new Tzedakah project initiatives are created, sponsored by the Spiwak Family
- Raised \$2.7 million for the New Property + New Machon campaign



Ramah's growth and development in recent years since our last report has been heartening and inspiring. At camp, we often talk about *shehechiyanu* moments — moments of growth, of firsts, of accomplishments. Our camp has recently enjoyed several significant such *shehechiyanu* moments, including the historic celebration of Ramah's 60th Anniversary, the inaugural summers of the Kochavim Edah and New Machon program and the adjacent new property acquisition. Such events would not happen without the hard work, generous support, and partnership of dedicated community members, board members, and donors like you. From the bottom of my heart, truly, thank you. Because of you, the achievements outlined herein were made possible. Todah Rabah!

Shehechiyanu, v'kiyamanu, v'higianu l'zman ha-zeh!

B'virkat Shalom,

A handwritten signature in blue ink, appearing to read 'Joe'.

Rabbi Joe Menashe
Executive Director



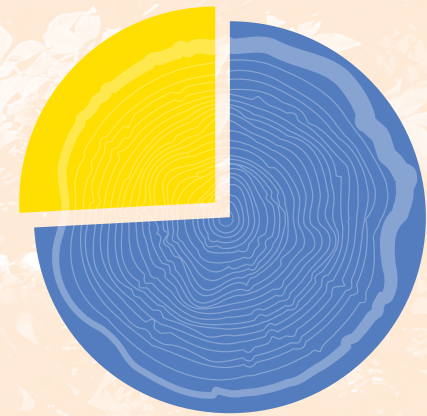
At a Glance

The charts reflect a fiscal year of January through December. These graphs represent the summer program, year-round program, administration, and development.



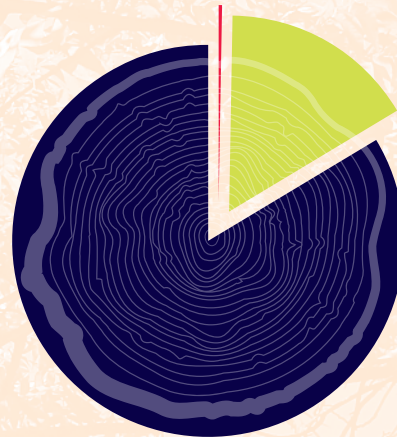
2015 REVENUE

■ Program: \$6,642,400
■ Contributions/Grants: \$1,331,235



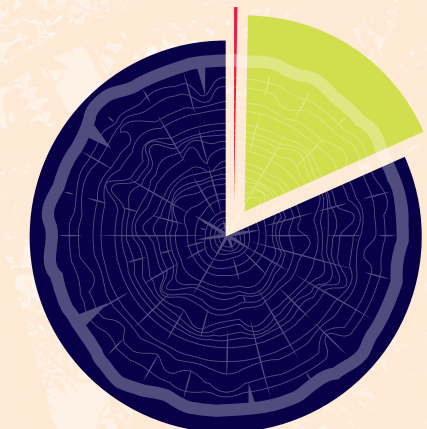
2016 REVENUE

■ Program: \$7,110,600
■ Contributions/Grants: \$2,464,125*



2015 EXPENSES

■ Program/Operations: \$5,943,930
■ Management/Maintenance: \$1,131,000
■ Fundraising: \$34,119



2016 EXPENSES

■ Program/Operations: \$6,008,904
■ Management/Maintenance: \$1,323,000
■ Fundraising: \$40,000

*Represented in this amount are capital contributions for the New Property/Machon Campaign.

Thank you, Camp Ramah in California, for changing my life.

A LETTER FROM TALIANNA GORDON KNIGHT, A 2017 MACHON CHANICAH FROM PORTLAND, OR



HOW EXACTLY am I supposed to explain the impact this summer, and the seven summers before that, have had on the person I am today? How am I supposed to thank EVERY single human being who pushed me to grow and made me feel loved throughout my camp journey?

Are there even words to express the gratitude I have for my parents who started sending me to Camp Ramah when I was only eight years old? I don't think there are but I am going to try.

These eight summers have been the best of my life. Each one getting better and better. When I'm at camp, I see the world through a different lens. I meet new people and learn tools to build my confidence. Each summer at Ramah, not only am I able to let loose and have fun, I feel loved. I'm with people who are changing the world and making an impact.

Coming into this new Machon was weird and scary. But that's because I didn't yet know about manhigut (leadership/working with campers) and maccabiah (color war) and being darshanit (teacher of Torah) and all night Beit Midrash. I didn't know about tiyul gibush (backpacking to Lake Casitas) & tza'adah. I didn't know that I was about to meet 57 people who are changing the world. This was by far the BEST summer of my entire life and I just didn't know it yet.

During the 28 days I spent in Ojai, I understood the impact of my actions and what it means to stand up for what I believe. I understood what it really means to be leader. It empowered me to want to change the world around me. I understood what it means to work for something

I care about. To be happy. To establish connections. To be a Jew. That's how camp changed me. I finally understood who I am. It was the most meaningful 28 days of my life.

I can't promise it will be the right place for every single kid, but for the kids that it is, camp will be the most amazing gift you could ever give them. It is an unparalleled experience, full of opportunities to grow, learn, and cultivate a stronger sense of identity. It is a place where kids really begin to understand themselves and the world and are happier than they have ever been before.

So have these words served justice to the impact camp has had on me? To be honest, I'm not sure if that is possible. But for now, I just want to say: Thank you.

Thank you, Camp Ramah in California, for changing my life. Thank you, Machon, for opening my eyes.

Thank you to every counselor who showed me what it means to be a strong, intelligent, independent, kind human being.

Thank you to every Rosh, specialist, mishlachah, kitchen staff for working tirelessly to make sure every day was meaningful and fun.

Thank you to my parents for letting me leave them for four weeks and to my grandma for even making it possible to go.

Thank you to every chanich or chanicha who has ever come to camp for pushing me and making me feel loved.

Thank you.

המכון החדש the new MACHON I CAN CHANGE THE WORLD



SEVERAL YEARS AGO, we embarked on a process and campaign to ensure that Ramah could grow in order to nurture a Ramah journey through high school and for those interested in a staff journey, and beyond. This project and campaign includes the acquisition of 174 adjacent acres of beautiful Ojai landscape and plans to build the **Roslyn & Abner Goldstine Machon Shetach** to house machon during the summer and benefit Ramah and the community during the year.



The Ramah community has responded with overwhelming interest, positivity and support for the New Machon/Property Campaign.

Facility Enhancements

Our Roslyn and Abner Goldstine Machon Shetach (Village) will be designed especially for the new machon, but will also provide additional space for non-summer programming. Our new property will allow for new hiking trails, campsites, nature programming.

Expanded Programs

Now all our Ramahniks:

- Complete their high school and camper journey simultaneously
- Experience leadership opportunities and training that will enhance personal and professional growth for camp and beyond
- Are the same age as their Ramah counterparts on Ramah Israel Seminar

Nature Preserve (New Property)

The new property expands our contiguous lands to 445 breathtaking acres. We now control our destiny by owning and securing the land adjacent to the entire northern border. We will be able to transform our connection to nature by providing campers with established hiking trails, campsites, viewpoints, tucked away valleys, and more!



"Our son's experience this summer in the new Machon was genuinely the pinnacle of his years at Camp. The most impactful aspect was the manhig program where he worked as a "junior counselor" with a younger edah. Through this he learned the fundamentals of being a madrich and now considers coming back as tzevet to be the imperative next step in his Ramah journey." – Lisa & Craig Cooper



New Machon | Property Honor Roll

As of 12/31/2016

MACHON SHETACH

Roslyn & Abner Goldstine

MERCAZ MANHIGUT

Center for Leadership

Rachel & Lee Rosen

ROSH PINAH

Cornerstones

\$250,000 — \$499,999

June & Irving Brott z"l

Manny Kaplan

Irene & Howard Levine

Julie & Marc Platt

MINYAN CIRCLE

\$100,000 — \$249,999

Nancy & Scott Beiser

Ellen & Adam Beren

Janet & Jake Farber

Sheila & Aaron Leibovic

Amy & Harold Masor

Judy & Lou Miller

Sheila & Alan Spiwak

Shari & Michael Weiner

Diane & Howard Zack

AMUDIM

Pillars

\$25,000 — \$99,999

Aviva & Leon Biederman

Rochelle & Freddy Cohen

Lisa & Craig Cooper

Harold Grinspoon Foundation

Nancy Beren & Larry Jefferson

Lee & Stuart Posnock

Nurit & Rich Robin

Angel & Alan Schneider

Marci & Andrew Spitzer

Orna & Keenan Wolens

Lesley & Jeff Wolman

TOMCHIM

Supporters

\$10,000 — \$24,999

Ellen & Jeff Brown

Sonia Daccarett & Alex Bernstein

Beth & Rodney Freeman

Gaby & Jeffrey Kaplan

Rebecca & David Kekst

Lisa & Gary Lainer

Deborah Musher &

Rabbi Joe Menashe

Ilana & Mark Meskin

Beth & David Ricanati

Sandi & Avi Schlessinger

CHAVERIM

Friends

\$2,500 — \$9,999

Anonymous

Samantha & Michael Auerbach

Sammy Averbach

Rhoda & Robert Barnhard

Jamie & Joel Berman

Michelle & Rabbi Micah Caplan

Jill & Adam Carmer

Judy and Les Eber

Fariba & Nathan Fischel

Kayla Garaway

Lela & Norman Jacoby

Jennifer & Michael Kaplan

Rebecca & Wayne Levin

John Magoulas

Leslie & Josh Mereminsky

Marlene & Randy Michaels

Amy & Joey Miller

Heidi & Jon Monkarsh

Karmi & Harold Monsher

Gabriella Nourafchan

Ilana & Steve Ormond

Ariella Moss Peterseil &

Nachum Peterseil

Ben Platt

Hannah Platt

Elizabeth & Rabbi David Saiger

Sherri & Rob Schreiber

Anna & William Tenenblatt

Stephanie & Michael Weisberg

Elana & Bruce Zisser



To be involved in this campaign,
contact John Magoulas at john@ramah.org



A Journey for a Lifetime
CAMP RAMAH IN CALIFORNIA



CAMP RAMAH IN CALIFORNIA commemorated its 60th anniversary with a Ramah Academy Shabbat featuring David Passig, PhD, artist David Moss, and comedian Mark Schiff. Participants enjoyed a beautiful and meaningful Shabbat filled with discussions and opportunities to connect with old friends and engage with new ones.

The 60th celebration weekend culminated with the **I ♥ RAMAH** festival, a community-wide celebration with hallmark camp activities such as a ruach-filled singing session with David Ross, arts and crafts, swimming, ropes course, hiking, and a delicious camp BBQ. We honored all of our past presidents and life trustees.

The Ramah Academy and **I ♥ RAMAH** festival highlighted generations of Ramah campers, parents, staff, alumni and supporters reuniting and celebrating the magic of Ramah—our special place in Ojai that continues to be the touchstone of lifelong friendships, Jewish values, morals, ideals... and fun!

I ♥ RAMAH
FESTIVAL

Ramah Academy Weekend Chairs

Rhoda & Dr. Robert H. Barnhard
Lisa & Victor Kohn
Abby & Jonny Mars
Lesley & Jeffrey Wolman

I ♥ RAMAH Festival Chairs

Ellen Brown and Tzivia Schwartz Getzug

Alon Binyamin



Legacy Circle



"My parents, June & Irving, were proud of their Jewish identity, and wanted to pass that along to my brother and me. So they sent us to Camp Ramah in California, and we have many fond

memories from our summers! They knew about the magic of camp, and its power to shape Jewish identity and engagement in the long term. My parents wanted to make sure that every kid has a camp opportunity, and there is no better place for that than Camp Ramah in California. To them, leaving a gift to camp was their way of ensuring the Jewish future." — Jim Brott



We thank and congratulate the following Individuals and families who have signaled their intent to support Camp Ramah in California in perpetuity as members of the Alon Binyamin Legacy Circle:

Carol & Charles Abrams
Jennifer & Aaron Aftergood
Samantha Platt Auerbach
& Michael Auerbach
Alex Bernstein & Sonia Daccarett
Dr. David Braun
June & Irving Brott z"l
Ellen & Jeff Brown
Rochelle & Freddy Cohen
Sherri & Paul Cunningham
Julie Shuer & Steve Davis
Janet & Jake Farber

Jennifer & Rabbi Daniel Greyber
Harold Grinspoon
Toni Hertz
Marlene & Barry Horwitz
Nancy Beren & Larry Jefferson
Rebecca & David Kekst
Sheila & Aaron Leibovic
Miriam Lincoff
John Magoulas
Deborah Musher
& Rabbi Joe Menashe
Ilana & Mark Meskin

Marlene & Randy Michaels
Judith & Louis Miller
Karmi & Harold Monsher
Karen & Robert Nagle
Paulette & Ron Nessim
Larry Parker
Julie & Marc Platt
Tara & Jay Reisbaum
Fred & Rabbi Joel Rembaum
Bea Reynolds
Kathy & Peter Reynolds
Sheri & Paul Robbins

Laura & Howard Roselinsky
Gwen & Jeremy Rosenthal
Judy & Rabbi Leonard Rosenthal
Sandi & Avi Schlesinger
Angel & Alan Schneider
Jennifer & Ron Schneidermann
Sue Stengel & Steve Wallock
Jackie & Michael Waterman
Orna & Keenan Wolens
Bruce Whizin

As of 12/31/2016

Contact John Magoulas to make a legacy commitment at john@ramah.org

Dedicated Facilities

Albert Observatory
in memory of David Lawrence Albert

Jeff Astor Foundation Volleyball Court
in memory of Jeff Astor

Ballonoff Aron Hakodesh
in memory of Rabbi Martin A. Ballonoff

Bassan Heiser Lodge

Belzer Bunk Renovations

Beren Athletic Facility

Beren Family Parking Space

Robert M. Beren Tennis Center
*in honor of his children & grandchildren &
 his sister, Lela Beren Jacoby & her children
 & grandchildren*

Berg Commons
in honor of Al & Bess Berg

Golden-Berkley Family Shade Sail

Handball Court
in memory of Ilan Gabriel Biederman

Ma'agal Ilan
in memory of Ilan Gabriel Biederman

Braun Solar Facilities

Bressman Family Benches

Cohen-Farber-Lavender Families
 Solar Pool Heating

Cole Family Outdoor Sanctuary

Deutsch-Kurland-Weiner Friendship Circle

Deutsch Boys' Showers

Rehov Deutsch

Dorff-Nelson Kikar Tzion Outdoor Sanctuary
in memory of Edith Judith Nelson

Elaine & Leo Dozoretz Prayer Area

Sunny & Harold Easton Prayer Area

Sidney Eichenbaum Soccer Field

Familian-Smalley Swimming Pool Facility
in memory of Sunny & Isadore Familian

Janet and Jake Farber Campgrounds at the
 Max and Pauline Zimmer Conference Center

Farber Baseball Field

Feinstein Plaza

Federman Hersh Administration Building

Fingerhut Chapel

Flax Art Center

Friedland Lodge

Friedman Library *in memory of Jack Lubeck*

Friendship Benches
*in honor of Tara & Jay Reisbaum,
 Sandi & Avi Schlesinger and
 Marci & Andrew Spitzer*

Friday Night Group Bench

Ner Tamid
given by the Gilberg and Lenz Families

Gilbert Basketball Benches
in memory of Dr. Spencer Gilbert

Gindi Chadar Ochel

Leone & Marvin Golden Prayer Area

Gonda Family Foundation Director's Office

Milton & Sandy Gordon & Family Prayer Area

Helene & Albert Greenfield Prayer Area

Greyber Family Bench

Greyber Family Retreat Center Suite

Hyman Kikar Lil

Jacoby Family Amphitheatre

Lela & Dr. Norman Jacoby Prayer Area

Janks Family Pool Slide Landing Area

Jefferson Health Center Ward
in honor of Irene, Elizabeth & Alexander Jefferson

Charlotte & Dr. Edward Kamenir Prayer Area

Kasirer Family Beit Midrash & Torah

Kitah Table
in memory of Dolores D. Kaye

Herman H. Kaye Medical Center

Kitchen Renovation
*given by the Farber, Gindi & Miller Families
 and the Martin F. Witkin Charitable Trust*

Labowe Bunks

Sara & Simha Lainer Prayer Area

Alon Binyamin
in memory of Ben J. Lax

Marp Suite
*in memory of the parents of
 Allan & Mary Lazaroff*

Lazaroff Camper Residence

Leibovic Family Kitah Table
in honor of Tova, Talia & Tori Leibovic

Aaron & Sheila Leibovic Family Pool

Leibovic Family Pool Slide

Shirley & Ted Levine Basketball Court
in memory of Ted Levine

Irene & Howard Levine Family Retreat Center

Levine Garden Patio
in memory of Phillip M. & Beatrice Levine

Levine Canteen

David & Esther Lieber Dining Hall



Dedicated Facilities



Lincoff Nurse's Office
 Rehov Lincoff
 Adam Lipton Bunk Play Area
 Benjamin Lowy Remote Campground Trail
 Makom Nefesh
*in memory of Max and Sylvie Levine and
 Bernard and Evelyn Snyder, given by
 Allyn, Jeff, Deborah and Lauren Levine*
 Meskin Family Kitah Table
 Meskin Family Full Perimeter Trail Loop
 Meskin Family Ropes Course
 Miller Bunks
*in honor of the grandchildren
 of Judith & Louis G. Miller*
 Miller Bunks
in memory of Sally & Meyer Miller
 Judith & Louis Miller Gazebo
 Mount Sinai Memorial Park Reading Room
 Evelyn & Seymour Neuman Prayer Area
 Nessim Family Pool Deck
 Jack and Bel Ostrow Executive Dining Room
 Evelyn & John Pennish Prayer Area
 Platt Family Dance Patio
*in honor of Samantha, Jonah, Hannah,
 Benjamin & Henry Platt*
 Platt Family Parking Space
 Marjorie & Herman Platt Prayer Area

Bea & Fred Reynolds Prayer Area
 Robin Camper Residence
 Flagpoles
given by M. Harvey & Jean Powell
 Rochlin Camper Residence
 Original Tennis Court Facility
in memory of "Mikey"— Michael Lawrence Roston
 Salkin Family Tree House & Trail
 Janet & Maxwell H. Salter Prayer Area
 Helen & Raymond Sandler Prayer Area
 Schlessinger Family Gaga Court
 Schlessinger Family Kitah Table
 Schlessinger Family Shade Sail
 Schneider Family Gan
in honor of Cheyenne, Evan & Ivy Schneider
 Rehov Schneider
 Vera & Abraham A. Schnierow Prayer Area
 Schulman Nurse's Office
 Rehov Selter
 Rehov Shalom
*in memory of Dr. S. Salem Fabe
 by Brenda Fabe & Michael Adler*
 Silverman Doctor's Suite
 Ezra Dormitory Suite
in memory of Lana Berke Silverman
 Flora & Arnold Skovron Prayer Area

Bea & Sam Smotrich Prayer Area
 Dr. Jacob Sokol Memorial
 Spitzer Heder Bishul
 Spiwak-Baran Staff Lounge
 Giborei Yisrael Beit Knesset
in memory of Jacob Hillel Stern
 Scott Stone Activity Field
in memory of Scott Noah Stone
 Stone Family Ezra Program Dormitory
 Esther Strimling Prayer Area
 Tenenblatt Family Pool Slide
 Tikvah Beit Knesset *given by Sandy Gordon*
 Waterman Family Parking Space
 Evelyn & Seymour Waterman Prayer Area
 Flag Circle *in memory of Jerry L. Weber*
 Weiner-Finkelstein-Taff Family Beit Yaacov
*in memory of Jack A. Finkelstein and in honor
 of Irving & Lillian Weiner & Kitty Finkelstein*
 Weiner-Finkelstein-Taff Family Parking Space
 Whizin Building
 Whizin Rose Garden and Entry
 Wolens Family Shade Sail
 Ruth & Allen Ziegler Bakery
 Ziegler Camper Residence
 Ziegler Hall
 Max & Pauline Zimmer Conference Center

With this list, we endeavor to build a permanent record of the many camp facilities made possible through the generosity of committed donors. Recognizing that Camp Ramah in California has moved from its original site and that the use of various camp facilities has changed over time, we realize there may be some errors or omissions. We hope that you will help in our efforts by notifying us of additions, corrections or changes that should be made to the permanent record.

Endowments

Endowments have been established to provide support for scholarships and for the development of new programs without the necessity of increasing camp fees. Camp Ramah in California would like to thank all who have donated to the Ramah Scholarship Endowment Fund and to our Program Endowments, and those families who have established the following endowments.

Scholarship Endowments

Anonymous Scholarship Endowment Fund
Appel Scholarship Endowment Fund
Sam & Rosalie Barnett Scholarship Fund
The Rhoda & Bob Barnhard, Betty & Sheldon Feinberg Endowment
in memory of Harry Barnhard
Becker Scholarship Endowment Fund
Robert M. Beren Scholarship Fund
Bockman Scholarship Endowment Fund
Deutsch Family Scholarship Endowment
Freda & William Fingerhut Scholarship Endowment Fund
The Abner & Roz Goldstine Scholarship Fund
Goodglick Family Scholarship Endowment Fund
Grandparents Four Scholarship Endowment Fund
Dr. Norman & Lela Jacoby Scholarship Endowment
Ralph & Taren Jacoby Metson, Joel & Susan Jacoby Stern, Jonathan & Judy Jacoby Chiel Scholarship Endowment Fund
in honor of our parents Dr. Norman & Lela Jacoby

Sybil & Mannon Kaplan Scholarship Fund
Debra & Robert Kasirer Scholarship Fund
Bessie Krevitz Scholarship Endowment Fund
Irene & Howard Levine Scholarship Fund
Philip M. & Beatrice Levine Scholarship Fund
Dr. David Leiber Scholarship Endowment Fund
Lowy Scholarship Endowment Fund
Petty & Bates Metson Scholarship Endowment Fund
Julie & Marc Platt, Ellen & Adam E. Beren, Nancy T. Beren & Dr. Larry Jefferson, Amy & Robert Bressman Scholarship Endowment
The Schneider Family Scholarship Endowment
Lana Berke Silverman Tikvah Scholarship Fund
The Smotrich Family Scholarship Fund
Reuben Tucker Scholarship Endowment Fund
Shari & Michael Weiner Scholarship Endowment
Sidney & Marilyn Williams Scholarship Endowment Fund
Whizin Scholarship Fund
Ziegler Scholarship Endowment Fund
Zimmer Scholarship Fund

Program Endowments

The Barnhard Mador Young Leadership Endowment
The Spitzer Family IKAR Endowment
The Spiwak Family Tikun Olam Endowment
Tikvah Program Endowment
The Ziegler Tikvah Counselors' Endowment

Other Endowments

June and Irving Brott Family Endowment
Nuritt & Elie Mechaly Facilities Beautification and Maintenance Endowment Fund
Art Williams Rosh Gesher Endowment
Hayom U'leTamid Endowment

2015–2016 Donors

The following donors* have supported Camp Ramah through contributions to annual campaign, scholarship, Tikvah, summer programming, special projects, capital improvements, and capital campaign. Donors to campaigns or giving societies are also listed on the preceding pages. We are very grateful to all the members of our Ramah community who are committed to supporting our beloved camp!

Anonymous (12)
 Anonymous **S** (4)
 Orly Abrams
 Debbie Lauterbach & Paul Abrams
 Adele Abramson
 Sharon Ackerman
 Turi & Scott Adams
 Lori Adels
 Yael & Yossi Afriat
 Sara & Dr. David Aftergood
 Cameron Allen
 Felice & Dr. Ron Andiman
 Cantor Judy Dubin Aranoff & Mel Aranoff
 Dr. Monique & David Araya
 Joanne & Bernard Arfin
 Madeline Chaleff & David Arfin
 Elana & Rabbi Bradley Artson
 Heidi & Dr. Noam Arzt **S**
 Patricia Asarch
 Adam Ash
 Michael Asher
 David Ashkenazi
 Estelle M. Ashkenazi
 Karen Ashkenazi

Ruth & Dr. Misha Askren
 Samantha Platt Auerbach & Michael Auerbach
 Ellen August
 Stella & Matt August
 Sam Averbach
 Benjamin Bachrach
 Melissa Wergeles & Adam Balaban
 Edith Ballonoff
 Beverly Barak
 Jeremy Barnett
 Rhoda & Dr. Robert H. Barnhard **S**
 Sharon & Alex Baskin
 Beth Bayard
 Phyllis & Sandy Beim **S**
 Nancy & Scott Beiser **S**
 Lynn & Rabbi Haim Beliak
 Tobin Belzer
 Debi & Elie Benaron
 Jeffrey Benaron
 Zev Bennett
 Cecile Reisbaum & Robert Benson
 Ellen & Adam Beren
 Nancy Beren & Dr. Larry Jefferson
 Robert Beren

Melissa & Michael Berenbaum
 Suzanne & Michael Berke
 Alyse & Stuart Berkley
 Maurice Berk-Wakeman
 Amy Berlin
 Ilene & Dennis Berman
 Jamie & Joel Berman
 Dina & Gordon Bernat-Kunin
 Sonia Daccarett & Alex Bernstein
 Barbara Bernstein
 Leah & Ralph Bernstein
 Sonja Berrin
 Lilian Bicas
 Lynn & Les Bider
 Drs. Aviva & Leon Biederman
 Daniel Black
 Ronald Blanc
 Sybil Flom Blank & Michael Blank
 Deena & Dr. Michael Blum
 Belinda & Michael Borden
 Selina & Dr. Brian Boxer-Wachler
 Deborah & Theo Brandt-Sarif
 Sandra & Robert Braun
 Susan & Jonathan Breakstone

Sarah & Matthew Brenner
 Tarryn & Saul Breskal
 Ellie Bressman
 Lindsay & Will Bressman
 Morris & Dale Brill
 Mollyann Brodie
 James Brott
 June & Irving Brott z"l
 Marcia & Rick Brous
 Ellen & Jeff Brown **S**
 Emily Brown
 Gracia Brown
 Clara & Roman Bruno



S Denotes Shomrei Ramah donors. (The name for Dorot Ramah changed to Shomrei Ramah in the 2017 Annual Campaign year.)

CAMP RAMAH'S SHOMREI RAMAH SOCIETY (Guardians of Ramah) includes donors who choose to make an annual contribution of \$5,000 or more, to support Camp Ramah's scholarship, programming, and unrestricted support for the camp's greatest needs. Shomrei Ramah Society commitments maintains the highest standards in Jewish summer campaign and ensures more campers connect to Jewish living by attending Camp Ramah. Vital funding from Shomrei Ramah Society means Camp Ramah in California continues its commitment to high quality infrastructure and addresses growing scholarship needs.

*If your name has been listed incorrectly, or was accidentally omitted please email pam@ramah.org so that we can update our records. We sincerely apologize for any errors.

2015–2016 Donors

Amy Bryman & Dov Tamler
 Jennifer Green & Scott Budman
 Emily & David Camras
 Linda & Michael Camras
 Carolyn & Rabbi Richard Camras
 Michelle & Rabbi Micah Caplan
 Edna & Berney Carlin
 Lital Carmel
 Rina Carmel
 Maeva & Charles Carter
 Christy & Alex Chaloff
 Etai Chen-Zion
 Rina & Daniel Chessin
 Rena Clark
 Julie & Arthur Cohen
 Andrea Hodos & Dr. Aryeh Cohen
 Aryell Cohen
 Deborah Cohen
 Rochelle & Freddy Cohen **S**
 Julie & Arthur Cohen
 Lauren Cohen
 Pam Kunick-Cohen & Mitch Cohen
 Cari & Rabbi Mitch Cohen
 Augustine & Bruce Coleman
 Louis L. Colen
 Dvorah Colker
 Lisa & Craig Cooper
 Jessica Cooper
 Riva Cooper
 Andrea & Danny Corsun
 Gabrielle & Malcolm Cosgrove
 Karen & Robb Cox Jr.
 Sherri & Paul Cunningham

Hedy & Rabbi Ralph Dalin
 Gail & Hal Dash
 Noah Dassa
 Cheryl & Bill Davidson
 Dr. Margaret Davis
 Sylvie & Mark Deutsch **S**
 Audrey Kraus & David Diamond
 Eileen & Dr. Don Diamond
 Hannah Diamond
 Lynn Osband & Steve Dick
 Tara Dietrich
 Tina & Rick Dinitz
 Mike Dolinka
 Lynn & Michael Doner
 Marlynn & Rabbi Elliot Dorff **S**
 Tanya & Michael Dorff
 Revital & Ilan Douek
 Tova Leibovic Douglas & Austin Douglas
 Marla & Ronald Drake
 Laurie Dubin
 Bonnie & Allan Duboff
 Judith & Dr. Leslie Eber
 Amy Edelstein
 Lylah Ehrnstein
 Lisa & Richard Eidman
 Beth & Mordechai Eisenberg
 Abraham Eiser
 Tibor Engel
 Elaine & Dr. Edward Epstein
 Judith & Scott Esbit
 Ari Fagan
 Lisa Lainer-Fagan & Brian Fagan
 Orly Fahn


Janet & Jake Farber **S**
 Alison & Michael Feinberg
 Nina & Rabbi Edward Feinstein
 Ada & Dr. Gary Feldman
 Judith & Melvin Feldman
 Ted Feldman
 Jonathan Feldman Greene
 Larry Fell
 Nomi & Israel Feuerstein
 Helgard & Irwin Field **S**
 Sandey Fields
 Tom & Rabbi Shawn Fields-Meyer
 Marcia & Fred Fink
 Drs. Nathan & Fariba Fischel
 Ruth & David Fiske
 Gwenn & Stuart Flait
 Rufina & Rafi Franco
 Marcia Freedland
 Jules Freeman
 Beth Astor-Freeman & Rodney Freeman
 Karen & Zev Fried
 Helyn & Robert Friedman
 Michelle & Bruce Fuller
 Oren Gabriel
 Julie Gadinsky
 Kayla Garaway
 Hillary Gardenswartz
 Samantha & Jeremy Garelick
 Michelle & Marc Gary
 Rachel & Dr. Avner Gereboff
 Joel Gereboff
 Tzivia Schwartz Getzug & Steve Getzug
 Susan North Gilboa & Rami Gilboa

Sharon & Herb Glaser
 Andrea Kasowitz & Andrew Goldberg
 Cindy & Gil Goldberg
 Ivonne & Daniel Goldberg
 Abigail & Eric Goldberg
 Dalia & Larry Goldberg
 Lisa Goldberg
 Fred Goldberger
 Caren Golden
 Caren & Steven Golden
 Hadas & Ahsaf Goldman
 Marian & Dr. Charles Goldsmith
 Beth & Gordon Goldsmith
 Liorah Goldsmith
 Roz & Abner Goldstine **S**
 Donna & Seth Golub
 Sandy & Bill Goodglick
 Daniela Goodman
 Doris & Ernest Goodman
 Frances & Milt Goodman
 Shawn Goodman
 Dana Goodman Schlessinger
 & Evan Schlessinger
 Robin Gorelick
 Elyse Weise & David Gorney **S**
 Karen & Jeffrey Goss
 Meira & Rony Gotesdyner
 Annette & Rabbi Mel Gottlieb
 Diane & David Gould
 Robin & Gil Graff
 Rachel Rubin Green & Norman Green
 Allison Greenberg
 Eli Greenberg
 Michelle Greenberg

2015–2016 Donors

Lawrence Greenfield
 Brianna Greenspan
 Randy Greenspan
 Zena Greenspan
 Karen & Steven Grey
 Anita & Christopher Griffith
 Simonette Lowy & Leo Grifka
 Hilda Grinker
 Sandy & Sid Gritz
 Margie & Robert Gross
 Lisa & Randy Gruen
 Regina Guggenheim
 Sophie Haas-Goldberg
 Ari Haber
 Robert Haberman
 Doris Haims
 Deborah Schmidt
 & Rabbi Abraham Havivi
 Henrietta Hebert
 Jenny & Rabbi Corey Helfand
 Barbara & Steven Helfgot
 Tamar Henry
 Danit Hetsroni
 Marlene & Barry Horwitz
 Diane Horwitz
 Mindy & Brad Horwitz
 Joanne Howard
 Rhonda & Hal Hurwitz
 Luiza & Andrei Iancu
 Robert Iancu
 Sharon Illions
 Joan Isaacs
 Bruce Isaacson
 Cynthia Jackson

Jacqui & Alex Jacobs
 Sheila & Orry Jacobs
 Ellen & Martin Jacobs
 Ellen & Orry Jacobs
 Pam Jacobson
 Lela & Dr. Norman Jacoby 
 Glenda Sacks Jaffee
 Nancy Beren & Dr. Larry Jefferson
 Simone Jowell
 Alexandra Kadoche
 Roneet & Ken Kahan
 Cathy & Ethan Kahn
 Charlotte Kamenir
 Cindy Benson & Rabbi Raphael Kanter
 Jordana & David Kaplan
 Susan & George Kaplan
 Haley Kaplan
 Gaby & Jeffrey Kaplan
 Manny Kaplan
 Jennifer & Michael Kaplan
 Paula Kaplan-Lefko
 Rabbi Glenn Karonsky
 David Kasirer
 Joanna Kasirer & Josh Kaplan
 Jonathan Kasirer
 Debra & Robert Kasirer
 Nancy & Bernard Kattler
 Sally Weber & Malcolm Katz
 Joelle Kaufman
 Robin & Matthew Kaufman
 Robin Kaufman
 Shelby Kaufman
 Benjamin Keer

Marilyn Keimon
 Rebecca Kekst
 Vicki & Stuart Kelman
 Debbi & Sol Kempinski
 Carol Kerster
 Ari Khuner-Haber
 Johanna & Jonathan Kichaven
 Harvey Kimmel
 Rabbi Sheldon Kirsch
 Leah Kitz
 Shir Klainman
 Joann D. Klar
 Linda & Abe Knobel
 Pamela Knudsen
 Samuel Knudsen
 Gail & Ben Zion Kogen
 Michal Kogen-Kress & Alex Kogen
 Lisa & Victor Kohn 
 Oscar Kohut
 Sydney Kohut
 Mona & Mark Kolko
 Michael Kornberg
 Sara & Tom Kornfeld
 Adam Krekorian
 Paula Krems
 Lynne Kruger
 Deborah & David Kupetz
 Eliana Kurzrock
 Rabbi Gail Labovitz & William Seligman
 Trana Labowe
 Michelle & Robert Laemmle
 Gail Lahat
 Michaly Lahat

Shayna Laidlaw
 Benjamin Lainer
 Lisa & Gary Lainer
 Leslie Ann Lainer
 Lee & Luis Lainer
 Ellie & Mark Lainer
 Alice & Nahum Lainer
 Sophie Lainer
 Brendan Lamishaw
 Sharon Landau
 Lisa Lapin
 Nadine & Steve Lavender
 Patty Lawenda
 Joshua Lax
 Deborah & Gary Lee
 Mallory & Dr. Gregory Lee
 Jill & Dr. Matthew Lefferman
 Sheila & Aaron Leibovic 
 Talia Leider
 Shana Chandler-Leon &
 Cantor Aaron Leon
 Diana Lerner
 Gabrielle Kaufman & Steve Leventhal
 Rebecca & Dr. Wayne Levin
 Julie & David Levine
 Irene & Howard Levine 
 Allyn & Jeffrey Levine
 Joyce Levine
 Jennifer & Dr. Daniel Levy
 Sharon & Darren Lewin
 Greg Lewis
 Andrew Lieber
 Irene Lieberman
 Mary Beth & Richard Lieberman

2015–2016 Donors

Jacob Liebermensch
 Trisha & Larry Liebermensch
 Rabbi Sharon Brous & David Light
 Wendy & Ivan Light
 Rachel Light
 Miriam Lincoff
 Jill & Dr. Nat Linhardt
 Elina Kaplan & Daniel Lipkin
 Gabrielle & Elie Litov
 Debra Lizarraga
 Alison Lobenstein
 Bailey London
 Karen Longobart
 Jennifer Low
 Joi Morris & Matthew Maccoby
 Ronda Machlovitz
 John Magoulas
 Janet & Alan Malki
 Bobbie Feinberg & Ely Malkin
 Marci Maniker-Leiter
 Rita March
 Rochelle & Edwin Marcus
 Eve Marcus
 Miriam Lek Marcus
 Drs. Caryn Hertz & Lawrence Marks
 Alice & William Marks
 Abby & Jonny Mars
 Marilyn & Dr. Alvin Mars
 Steven Martini
 Amy & Harold Masor
 Ella Matrovski
 Susan Mattisinko & Robert De Leon
 Marla & Andrew Mayer

Julie & Joel Mayer
 Yarden Mazor
 Sharon McCauley
 Harry Medved
 Kevin Meepos
 Tali Menachem & Mark Jomsky
 Bette & Albert Menashe
 Deborah Musher & Rabbi Joe Menashe
 Linda & Mark Mendelsohn
 Golda & Martin z"l Mendelsohn
 Leslie & Josh Mereminsky
 Ilana & Dr. Mark Meskin S
 Myra Meskin
 Deena & Dan Messinger
 Bob Meth
 Adria & Philip Metson
 Taren & Ralph Metson
 Dina Hellerstein & Joshua Metzger
 Rachel Metzger
 Marylyn Metzger Nahl
 Lora & Jim Meyer
 Marlene & Randy Michaels
 Lauren Miller
 Judy & Lou Miller
 Steve Miller
 Dr. Wendy Miller
 Dr. William Miller
 Victoria & Morris Mintz
 Daniela Mirell
 Laurie Levenson & Douglas Mirell
 Susan & Arthur Mishler
 Ryanna Mitchell
 Courtney Mizel & Adam Levin S

Lea & Avry Mizrahi
 Heidi & Jon Monkarsch
 Karmi & Harold Monsher S
 Jaime Monsher
 Ari Moss
 Elliot Muller
 Karol & Dr. Daniel Musher
 Terri & Howie Naftalin
 Elana & Rabbi Adam Naftalin-Kelman
 Pantea & David Naghi
 Danielle Natelson
 Gabrielle Natelson
 Debra Neinstein
 Paulette & Ron Nessim S
 Esther Netter
 Gabriella Nourafchan
 Gail & Ken Nussen
 Pamela & Jerry Offsay
 Linda & Larry Okmin
 Sharone & Rabbi Gary Oren
 Ilana & Steven Ormond
 Julie & Ron Pardo
 Sam Parsi
 Nina & Edward Paul
 Sara Pavell
 Danielle & Jonathan Pearl
 Wanda & Avi Peretz
 Susan Perin
 Ann & Tony Perry
 Sheryl & Louis Pessah
 Jacob Peterseil
 Lisa & Alan Petlak
 Ruth & Sidney Pilot



Hilane Pincus
 Julie Hoskins-Pittler & Greg Pittler
 Ben Platt
 Hannah Platt S
 Henry Platt
 Sue & Howard Platt
 Julie & Marc Platt S
 Dalia Stein-Podwol
 & Rabbi Shalom Podwol
 Marcy & Andrew Polsky
 Ari Polsky
 Brooke Posnock
 Lee & Stuart Posnock
 Sharon Powell
 Susan & Josh Pretsky
 Joseph Rabinov
 Bess Radin
 Deborah Raiken
 Josh Raikin
 Leora & Gary Raikin
 Paulette Light & Jeff Rake
 Sandra & William Rake
 Pam Raphael
 Julie & Marc Rashba
 Gillian & Brian Rassiner
 Richard Ravich
 Barbara Ravitz

2015–2016 Donors

Eli B. Recht
 Liora Rothchild & Ben Reder
 Tara & Jay Reisbaum
 Fredi & Rabbi Joel Rembaum
 Felice Resnick
 Ralph Resnick
 Bea Reynolds
 Kathy & Peter Reynolds
 Miriam Ben-Shoham & Ron Reynolds
 Dr. Beth Ricanati & David Ricanati
 Helen & David z"l Rifkind
 Alissa Rimmon
 Dina & Ron Rimmon
 Julia Riseman
 Peggy & Edward Robin 
 Nurit & Richard Robin
 Joan Rock
 Gail & Frederic Rollman
 Jennifer Romano
 Rachel & Dr. Lee Rosen
 Jessica Rosenbaum
 Rony & Mark Rosenbaum 
 Roberta Goodman-Rosenberg
 & David Rosenberg
 Helene Rosenblatt
 Janet & Bobby Rosenblum
 Eytan Rosenman
 Ann Rosenthal
 Gwen & Jeremy Rosenthal
 Margalit Rosenthal
 Wendy & Allan Rosenthal
 Toren Rosenzweig
 Lauren & David Ross
 Susan & Victor Ross

Liora Rothchild
 Noah Rothman
 Jonah Rothstein
 Britt & Stuart Rubenstein
 Sheila & Irv Rubin
 Judith & Jonathan Rubin
 Suzanne & Fred Rucker
 Sunny & Larry Russ
 Rica & Victor Sabah
 Florence & George Sacks
 Mary Ann & Robert Sacks
 Sondra & Richard Saewitz
 Roen & Don Salem
 Dorothy & Abe Salkin
 Joan Salzman
 Jessica & Mark Samuel
 Dr. Claudia Wallock-Samuels
 & Sandor Samuels
 Sergio Sanchez
 Vivian & Jeffrey Saper
 Irene Basloe-Saraf & Tal Saraf
 Leetal Sayegh
 Carin & Selwyn Schachat
 Melissa Sandler & Adam Schaffer
 Albert Schatz
 Judy & Rusty Schlegel
 Tamar Dickstein & Adam Schlesinger
 Sandi & Avi Schlesinger
 Lisa Schlesinger
 Dana Goodman-Schlessinger
 & Evan Schlessinger
 Shira Schlessinger
 Susan & Isaac Schmidt
 Angel & Alan Schneider

Leslie Spero Schneider
 Robyn Schneider
 Jennifer & Ron Schneidemann
 Joseph Schnitzer
 Joseph Schonbrunn
 Lesley Schreiber
 Sherri & Robert Schreiber
 Susan Schulman
 Joan & Paul Schultz
 Susan Goland & Russell Schwartz
 Sheila Schwartz
 Rachelle & Jeffrey Schwartzman
 Suzanne & Stuart Schweitzer
 Tamara Schweitzer
 Rachel & Eric Seder
 Hilda Balakhane & Albert Sedighpour
 Alisha & Rabbi Ahud Sela
 Rivka Rebeka Shaked
 Alisa & Roy Shaked
 Eli Shannon
 Annette & Daniel Shapiro
 Bonnie & Dr. Josh Sharfman
 Laura-Beth & Jack Sholkoff
 Robin & Rabbi Ron Shulman
 Fred Siegel 
 Shelli & Danny Silver
 Maxine Silverberg
 Selma & Phillip Silverman
 Dotty & Sidney Simmons
 Dale Singer
 Paula & Daniel Singer
 Deborah & Chaim Singer-Frankes
 Rachel Sisk

Ruthie Matanky Skaist
 Ilan Slovin
 Fallon Smalberg
 Helene & Ira Smith
 Nan Smith
 Rena & Ted Snyder
 Jacques Soriano
 Elizabeth & Michael Soroudi
 Ronna & Ron Spiegel
 Eric Spitz
 Marci & Dr. Andrew Spitzer
 Louise Spitzer
 Sheila Baran-Spiwak & Dr. Alan Spiwak 
 Bruce Starkman
 Jennifer Gallop & Rabbi David Starr
 Karen Stein
 Meghan Stein
 Ann & Barry Steinberg
 Maureen Sweeney
 Mark & Kaylee Steinhauer
 Fran & Arnold Stengel
 David Stern
 Susan Jacoby-Stern & Joel Stern
 Sheryl & Mark Stiefel
 Lora Silverman & Dr. Keith Stolzenbach
 Susan Stone
 Lisa & Rabbi Brian Strauss
 Leigh & Robert Strauss
 Stella & Dr. Leslie Stricke
 Kathryn & Dr. Carey Strom
 Noah Suissa
 Karen Platt & Scott Sussman
 Drew Swalley

2015–2016 Donors

Debbie & Eric Swanson
 Matthew Swanson
 Nancy & Neal Swerdlow
 Sylvia Tarica
 Susan & Marshall Temkin
 Anna & William Tenenblatt
 Lori Tessel
 Tracey Thompson
 Betty & Stuart Tochner
 Audrey & Nicholas Tomovich
 Linda & Jack Topal
 Orit Topf
 Linda & Norton Townsley
 Sylvia Bernstein-Tregub & Burton Tregub
 Staci & Robert Trief
 Jennifer Kattler-Trilling
 & Lawrence Trilling
 Kaye Tucker
 Bonnie Tunick
 Betsy Uhrman



Judy & Walter Uhrman
 Rhoda Unger
 Dorothy & Paul Wachter
 Sue Wallock
 Muriel & Jeffrey Waterman
 Jackie & Michael Waterman **S**
 Jannie Magoulas & Ted Watson
 Mikaela Wayne
 Adina Weber
 Jonathan Weinbach
 Sharon & Josh Weinberg
 Shari & Michael Weiner
 Deborah & Joel Weinstein
 Judith & Allen Weinstock
 Ernie Weir
 Stephanie & Michael Weisberg
 Tamara Weiser
 Rhoda Weisman
 Lee Weisner
 Jackie Weiss
 Carole & James Wenger
 Melissa Balaban & Adam Wergeles
 Laurie Werner
 Helen & Richard Weston
 Martha & Seymour White
 Shelley S. Whizin
 Bonnie & Neil Wideman
 Shari Saperstein & Jerome Wiener
 Lisa & Eric Wilen
 Aliza Wine

Diane Winston
 Isabelle Winston
 Susie & Noam Witenberg
 Susan & Alan Wohl
 Orna & Keenan Wolens **S**
 Michelle Wolf
 Miriam Wolf & Daniel Moskowitz
 Lesley & Jeff Wolman **S**
 Lindsay Workman
 Daniel Woznica
 David Woznica
 Janice & Steven Yellon
 Diane & Howard Zack
 Jan & Phil Zakowski
 Ruth Ziegler
 Marilyn Ziering **S**
 Lola & Edward Zimble
 Elana & Scott Zimmerman
 Elana & Bruce Zisser
 Roberta & Murray Zucker
 Francine & Gregory Zweibel

Alpert & Alpert Iron & Metal Inc
 Beth El Synagogue
 D-Cantor Enterprises Inc
 Foundation for Jewish Camp
 Frontier Paint & Wall Covering
 Green Hasson & Janks
 Harold Grinspoon Foundation
 Jewish Community Foundation



The Jewish Federation of
 Greater Los Angeles **S**
 The Herman H. Kaye Charitable
 Foundation **S**
 Howard and Irene Levine Family
 Foundation
 Jonah Press Jewish Handicapped
 Children's Fund
 Lewis Brunswick and Rebecca Matoff
 Foundation, Inc.
 Max & Pauline Zimmer Family Foundation
 Milken Family Foundation
 Mount Sinai Memorial Parks
 & Mortuaries
 Nachshon Project
 National Ramah Commission
 Samuel and Helene Soref Foundation
 San Diego Jewish Academy
 Shomrei Torah Synagogue
 Whizin Support Foundation **S**
 Martin F. Witkin Charitable Trust **S**

Camp Ramah is deeply grateful to Jewish Federation of Greater Los Angeles, which, through its Ensuring the Future Campaign and Tour de Summer Camps event has provided significant support for our Scholarship program. Thanks to the LA Federation and our generous donors, we have been able to increase the amount of scholarship and financial assistance we can offer for our campers, guaranteeing a Ramah experience for all!

Ramah Leadership

Board membership is listed only for the years noted in this report

BOARD OF DIRECTORS 2015 – 2016

Andrew I. Spitzer, MD, Chair*
Samantha Auerbach
Nancy Beiser
Ellen Beren
Joel Berman*
Dr. Aviva Biederman
Ellen Brown*
Jill Carmer
Rochelle Cohen*
Alison Feinberg
Beth Astor Freeman
Oren Gabriel
David Kaplan
Jeffrey Kaplan*
Rebecca Kekst*
Gary Lainer
Sheila Leibovic*
Josh Mereminsky
Ilana Meskin*
Heidi Monkarsh
Karmi Monsher
Richard Robin
Dr. Lee Rosen
Avi Schlessinger*
Dana Goodman Schlessinger*
Sherri Schreiber
Tzivia Schwartz Getzug
Laura-Beth Sholkoff
Dan Silver



Joel Stern
Robert Strauss
Stuart Tochner
Robert Trief
Jennifer Kattler Trilling Michael Waterman
Shari Weiner
Orna Wolens
Lesley Wolman*

*Served on Executive Committee

HONORARY LIFE DIRECTORS

Dr. Robert H. Barnhard
Murray Cohen z"l
Jake Farber
Dr. Norman Jacoby
Mannon Kaplan
Dr. Paul Schultz
Howard Levine
Louis Miller
Julie Platt
Jay Reisbaum
Seymour Neuman z"l
Dr. Paul Schultz

PAST PRESIDENTS

Ben Lax z"l
Harry Friedman z"l
Seymour Neuman z"l
M. Harvey Powell z"l
Maynard Bernstein z"l



Howard Levine
Dr. Paul Schultz
Mannon Kaplan
Jake Farber
Louis G. Miller
Dr. Robert H. Barnhard
Jay Reisbaum
Julie Platt
Ilana Meskin
Avi Schlessinger

CAMP EXECUTIVE DIRECTORS

Rabbi Jacob Pressman z"l	1955
Dr. David Lieber	1956-57
Dr. Chaim Potok z"l	1958-59
Dr. Walter Ackerman z"l	1960-69
Rabbi Zvi Dershowitz	1963-73
Dr. Ronald Levine	1970
Rabbi Stuart Kelman	1971-72
Dr. Walter Ackerman	1973
Dr. Asher Meltzer	1974-75
Dr. Israel Spiegler (acting)	1976
Dr. Sheldon Dorph	1977
Dr. Alvin Mars	1977-84
Rabbi Glen Karonsky	1985-89
Rabbi Edward Feinstein	1990-93
Robin Graff (Winter/Interim Director)	1990, '93
Brian Greene	1994-2001
Rabbi Daniel Greyber	2001-2010
Rabbi Joseph Menashe	2010-current





I have an internship in New York for the summer. This is my third internship since last kayitz, and I do not think I would have had any of these opportunities had it not been for four summers on tzevet at Ramah.

Thank you: for helping me to foster the skills I gained as a Madricha, for providing me opportunities to be a leader on tzevet, and allowing me to continue growing in various roles throughout my four years on tzevet.

I was talking to some newly working professional friends, and there was a common thread in that at some point we had all been camp counselors. We believe the things we were offered in those camp experiences were the ones that prepared us most for the professional world. We all felt lucky to have had those working experiences before entering the so-called "real world" of job searching.

I feel I owe it to Ramah for the growth I have had professionally this year, and for the confidence I have stepping into my senior year of college and beyond.

— Rozzie, former madrichah





Save the Dates!

GALA CELEBRATION

December 3, 2017

Join Ramah at Sinai Temple as we honor Roz & Abner Goldstine and Abby & Jonny Mars with the Alumni Leadership Award.

CAMP RAMAH SUMMER CAMP 2018

Session 1* (grades 4 – 11): June 19 – July 16

Gesher Aleph (grades 3 & 4): June 19 – July 1

Gesher Bet (grades 4 & 5): July 3 – July 16

Session 2* (grades 4 – 11): July 19 – August 15

Gesher Gimmel (grades 3 & 4): July 19 – July 31

Gesher Dalet (grades 4 & 5): August 2 – August 15

*Amitzim and Ezra share the same start date.

RAMAH FUNDAY

November 5, 2017

Prospective and current families: Join us for a day at Camp Ramah in Ojai! Enjoy fun activities, tour our campgrounds and connect with old and new friends.

OPEN HOUSE

January 7, 2018

Calling all *new and prospective* families — Join us for a tour of camp and an information session to answer all your questions and start to feel the magic of Ramah!

RUACH NASHIM (Women's Retreat)

April 27 – 29, 2018

Refresh, renew and reconnect through this unique and joyous Shabbat experience.

PASSOVER CAMP

March 29 – April 8, 2018

Enjoy a relaxing, spiritual and family-friendly Passover experience at Camp Ramah.

CAMP OHR LANU

August 17 – 21, 2018

Camp Ohr Lanu is for families who have children with special needs. Join us for a true Ramah style camp experience for the entire family.

Camp Ramah in California • 17525 Ventura Boulevard • Suite 201 • Encino, CA 91316 • (888) 226-7726 • www.ramah.org



[Facebook.com/ramahcalifornia](https://www.facebook.com/ramahcalifornia)



[@ramahcalifornia](https://www.instagram.com/ramahcalifornia)



[@ramahcalifornia](https://twitter.com/ramahcalifornia)



Ziegler School of
Rabbinic Studies
OF AMERICAN JEWISH UNIVERSITY

Camp Ramah in California is an American Camp Association accredited, coed, residential summer camp affiliated with the Conservative Movement and National Ramah Commission and operates under the educational auspices of the Ziegler School of Rabbinic Studies at American Jewish University.